



FOUR SEASONS HOTEL MADRID

CENTRO CANALEJAS

Located in Madrid's Centro Canalejas, the Four Seasons Hotel is an exquisite link between past and present; a symbol of a city that continually adapts to the passing of time, with history tied beautifully to present.

In reviving this historic destination, seven buildings (dating from the 19th century to the 1940's) have been carefully restored and connected to create a common identity while preserving the varied architectural styles. The Palacio de La Equitativa, designed by José Grases Riera, with its dramatic rotunda, clock, and bell has been a familiar landmark for Madrileños for over a century and now houses most of the hotel. The building was completely hollowed except for the façade and initial structure. Over 16,000 historic elements were catalogued and restored, with approximately 3,700 incorporated into the design.

The criterion governing the project was to respect everything of historical or artistic value and complement with contemporary elegance that melds with the historic. As we designed new furnishings or details, we kept in mind the line of a chairback or leg with classical reference. These innate, subliminal references are what allow a contemporary chair to feel at home next to a Spanish antiquity.

One expertly preserved area is the former Banco Español de Crédito, now the hotel lobby, complete with original stained-glass windows and the green marble pillars with gilded capitals that once adorned the main bank's hall. Given the abundance of history present, our new design incorporates bold movements to strike a chord of relevance for today. The sinuous oval staircase rises three stories, passing by one of the hotel's striking art installations, *Starry Night*, by Eduardo Pérez-Cabrero (formed by star constellations representing human virtues). In fact, many of the modern touches in the hotel come from the art program, made up of 2,500 pieces selected from a competition designed by our team to engage emerging Spanish artists.

Where the lobby has a defined line between past and present, we made a quieter contrast at the function level. The ballrooms and meeting rooms visually flow with the architectural elements, without trying to mimic or fool the eye. The design is sympathetic to the historic elements, with a mostly quiet and neutral palette bringing cohesion to disparate spaces.

The luxury suites are all individually designed with the feel of a grand Madrid apartment. The striking Royal Suite was the private office of the bank's presidents since the early 1900s, and has retained many original features including the fireplace, ceiling molding and Juliet balconies. In the guestrooms a calm design sensibility, combined with quality Spanish manufacturers and artisans, allowed for highly customized pieces to fit within the countless conditions the historic site unveiled.

From the beginning of this project, we embraced the history - the surprises and nuances that presented at every turn. Responding to and respecting the past, the attitude was simply to find joy in incorporating these discoveries into the design. The resulting ambience is classical and well-appointed, with modern Spanish sophistication.



EXTERIOR FACADE

THE ELEPHANT HEADS ORIGINATED FROM ARCHITECT JOSÉ GRASES' INTEREST IN THEATRES LIKE THE PARISIAN EDEN



EL PATIO LOBBY

WINDOWS WITH CLASSIC SPANISH GRILLWORK CREATE
A DELICATE LACE PATTERN OF SUN BEAMS



FOUR SEASONS HOTEL MADRID



HISTORIC ELEMENTS
ORIGINAL GREEN MARBLE COLUMNS, SKYLIGHT,
FLOOR, RAILINGS, & BANK TELLER LINES - REIMAGINED



MODERN ADDITIONS
GRAND STAIR & STUNNING ART INSTALLATIONS
LIKE EDUARDO PÉREZ-CABRERO'S "STARRY NIGHT"



ELEVATOR ROTUNDAS
CLASSICAL SYMMETRY WITH MARBLE FLOORING
PERIMETER & WOOD FLOOR CENTER











PRESIDENTIAL SUITE
CONTEMPORARY SALON OVERLOOKING CASINO DE
MADRID & THE QUADRIGA CHARIOT SCULPTURE





TWO BEDROOM SUITE
A CUSTOM SUITE OF MODERN, CALLIGRAPHIC CARPETS,
DESIGNED BY JACABO PEREZ-ENCISO, & ALPUJARREÑA



TWO BEDROOM SUITE
A FIGURED WALNUT BAR, BEAUTIFULLY LIT & INSET WITH
BLACK LACQUER & BRONZED MIRROR



SUITE LIVING ROOM

AN INTERESTING MIX OF ANTIQUITIES WERE SOURCED
FROM ILLUSTRIOUS SPANISH AUCTION HOUSES



SUITE GUESTROOM & BATH

THE COMPLEX PALETTE IS SOPHISTICATED & TIGHTLY COORDINATED, REFLECTING A COLOR SENSIBILITY UNIQUE TO SPAIN



DOUBLE HEIGHT SUITE

DYNAMIC SUITE TYPE DUE TO DIFFERING BUILDING LEVELS, LOFT-LIKE FEEL WITH SUNKEN LIVING ROOMS



SUITE LIVING ROOM

THE CONDITIONS CREATED BY ADJOINING 7 BUILDINGS
ACROSS 4 LEVELS LED TO 118 UNIQUE GUESTROOM TYPES



TYPICAL GUESTROOM
LOOKING INTO INTERIOR COURTYARD WITH
ORIGINAL GRILLWORK

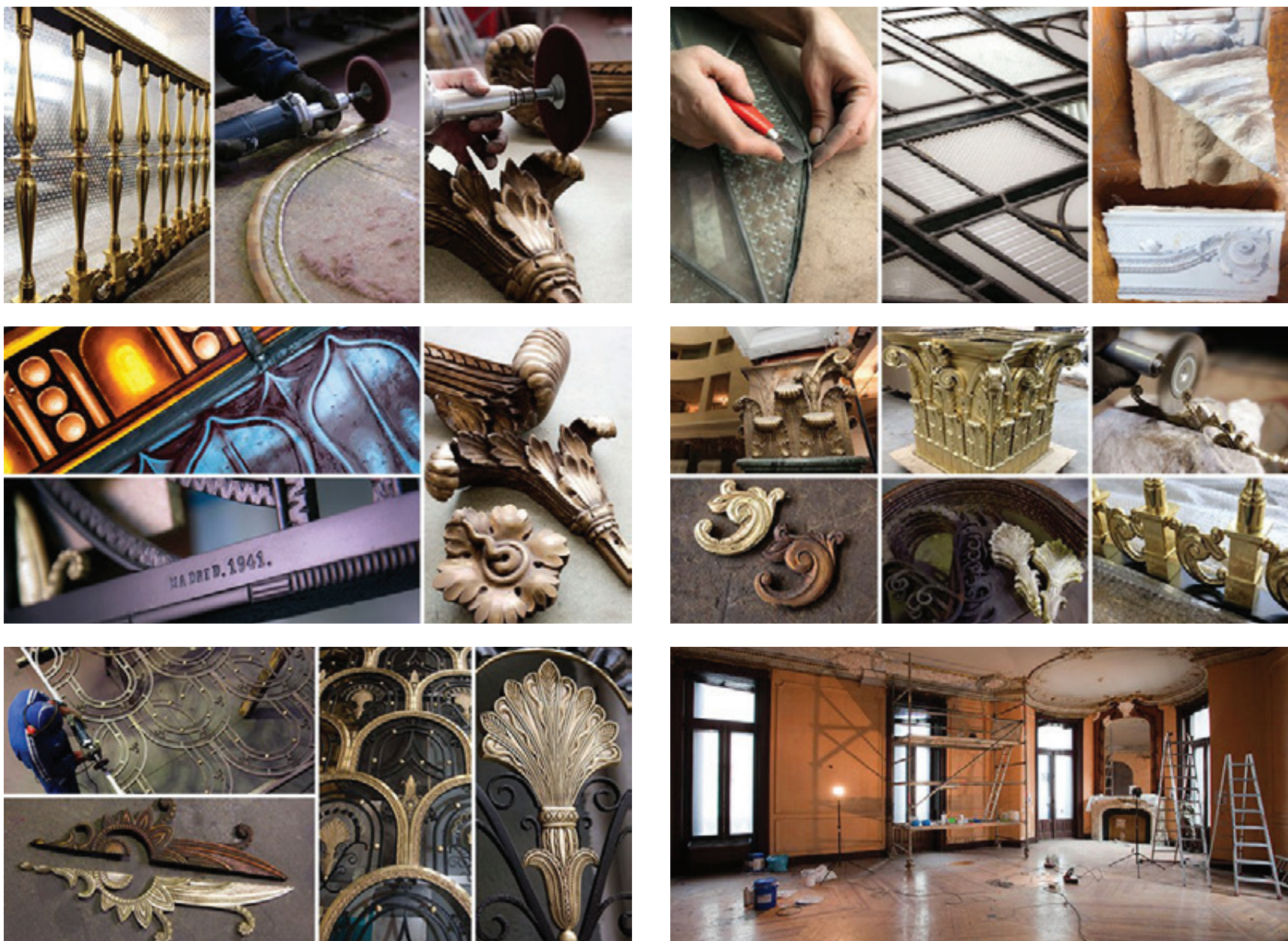


POOL

MODERN GLASS WALLS ABOVE & ON TWO SIDES, FOR
NATURAL LIGHT & VIEWS OVER COURTYARD & CITY

SUPPLEMENTAL PLANS, SKETCHES & IMAGERY





HISTORIC DETAILS RESTORED

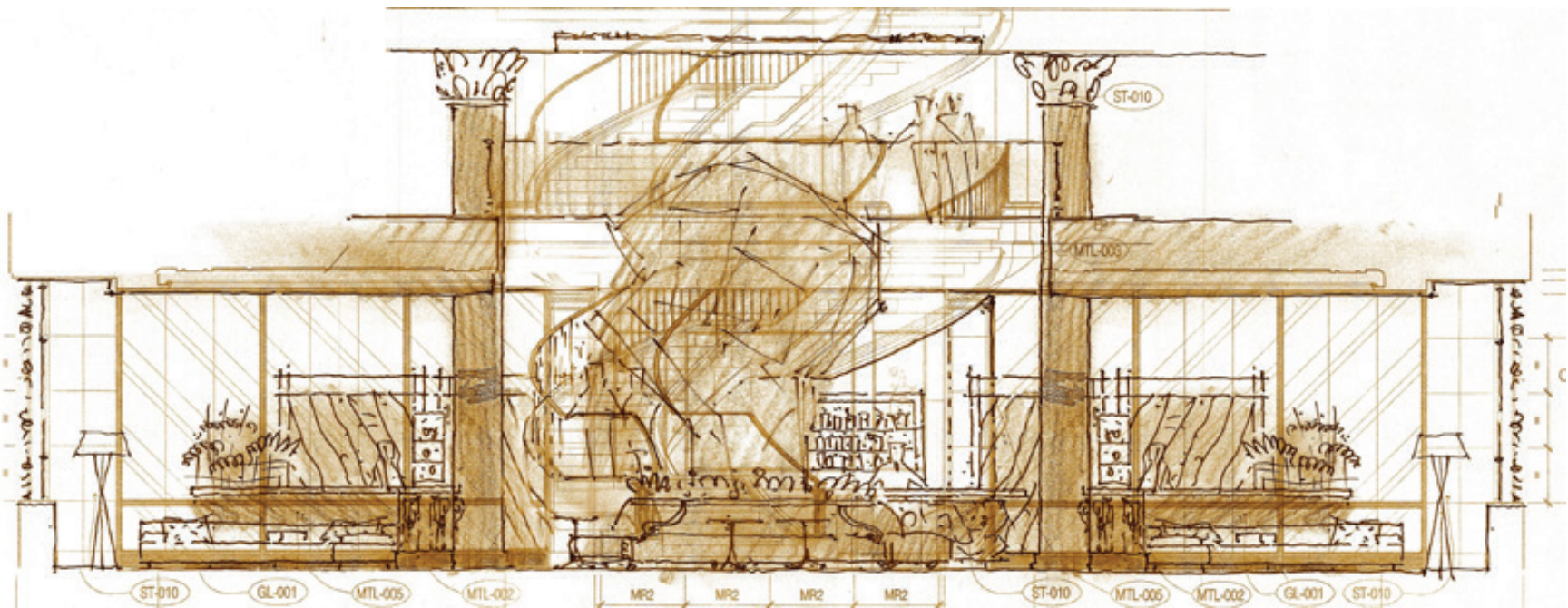
16,000 ELEMENTS REMOVED & RESTORED, WITH
OVER 3,700 INCORPORATED INTO DESIGN



EXTERIOR FACADE
SKETCH ELEVATION



EL PATIO LOBBY PRESENTATION PLAN

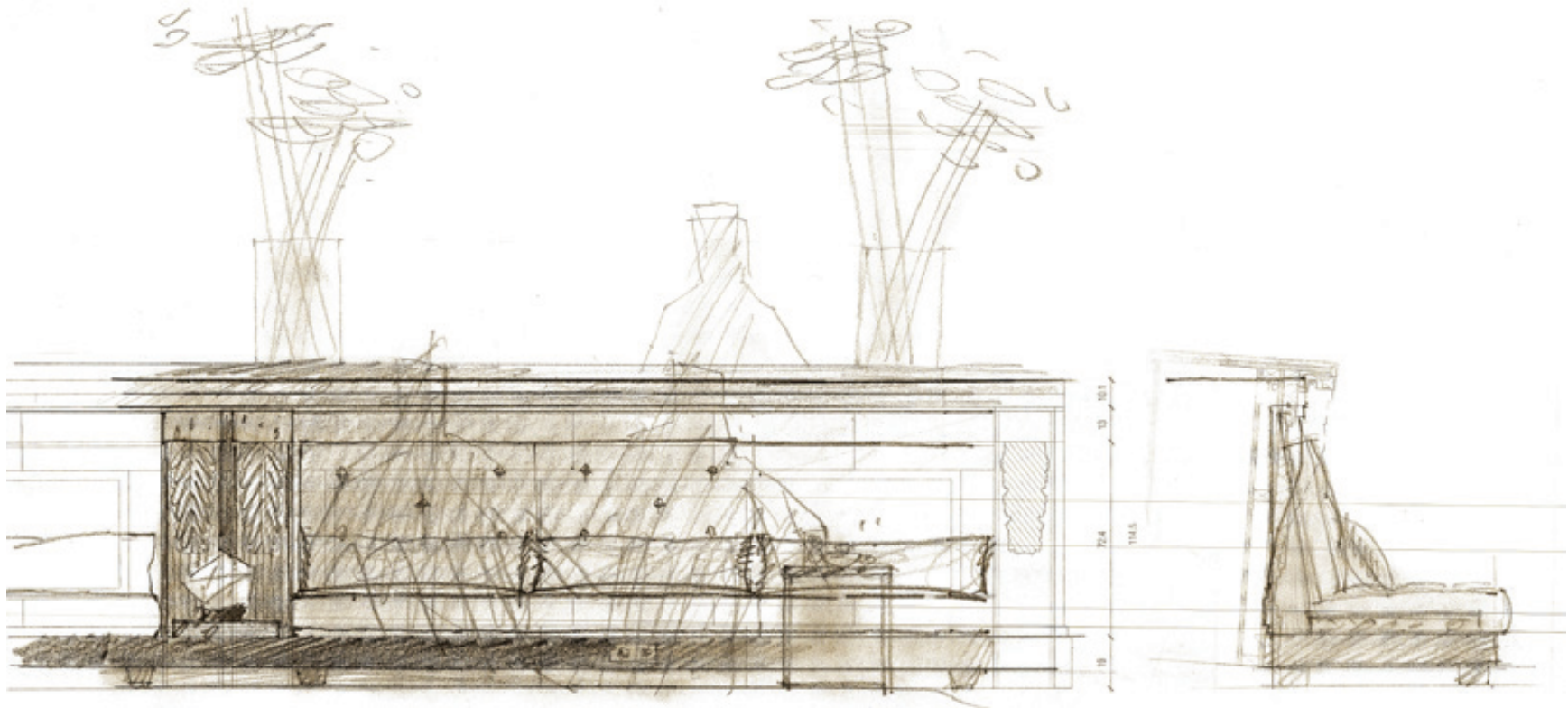


LOBBY GRAND STAIR
SKETCH ELEVATION



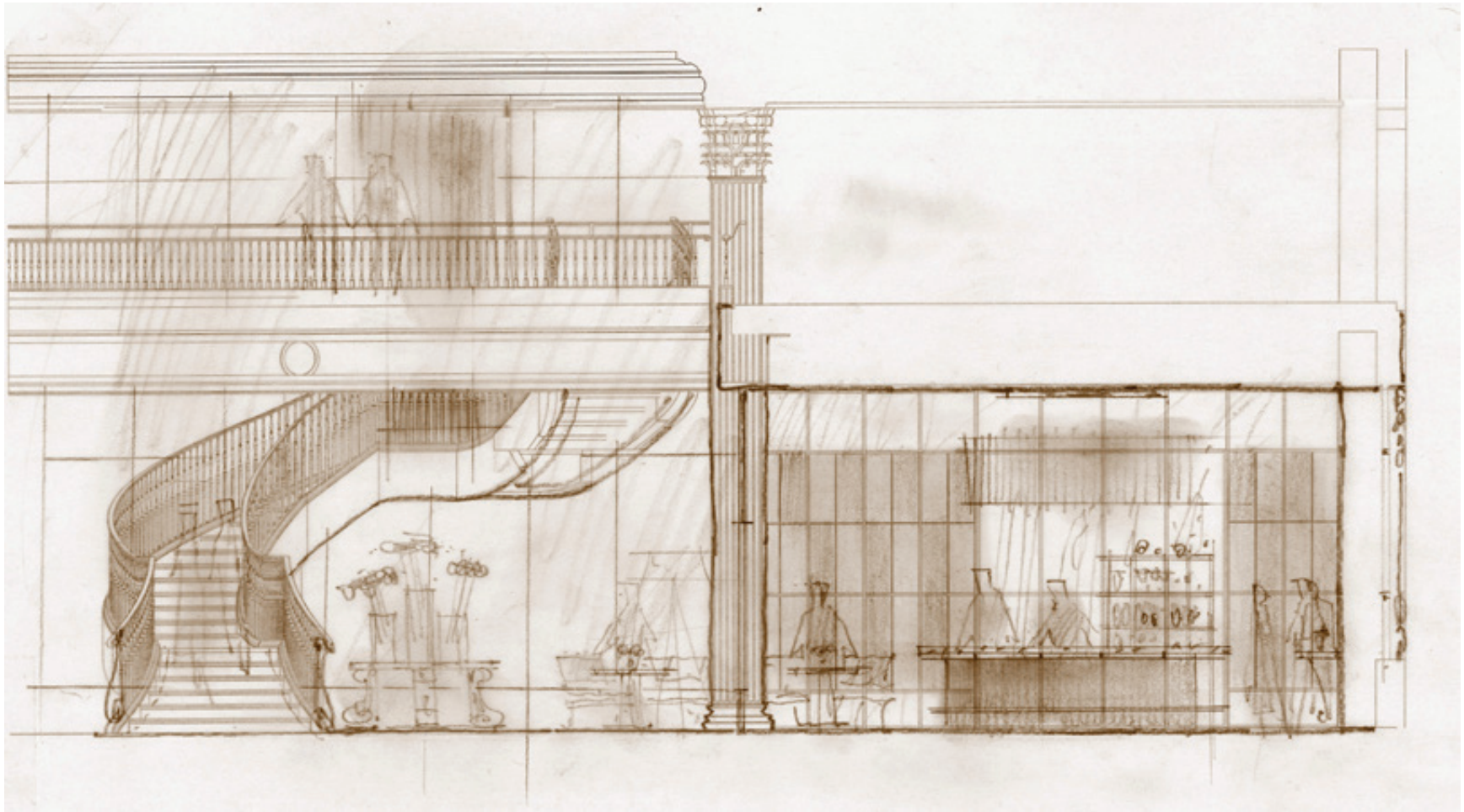
RECEPTION VITRINE
SKETCH ELEVATION

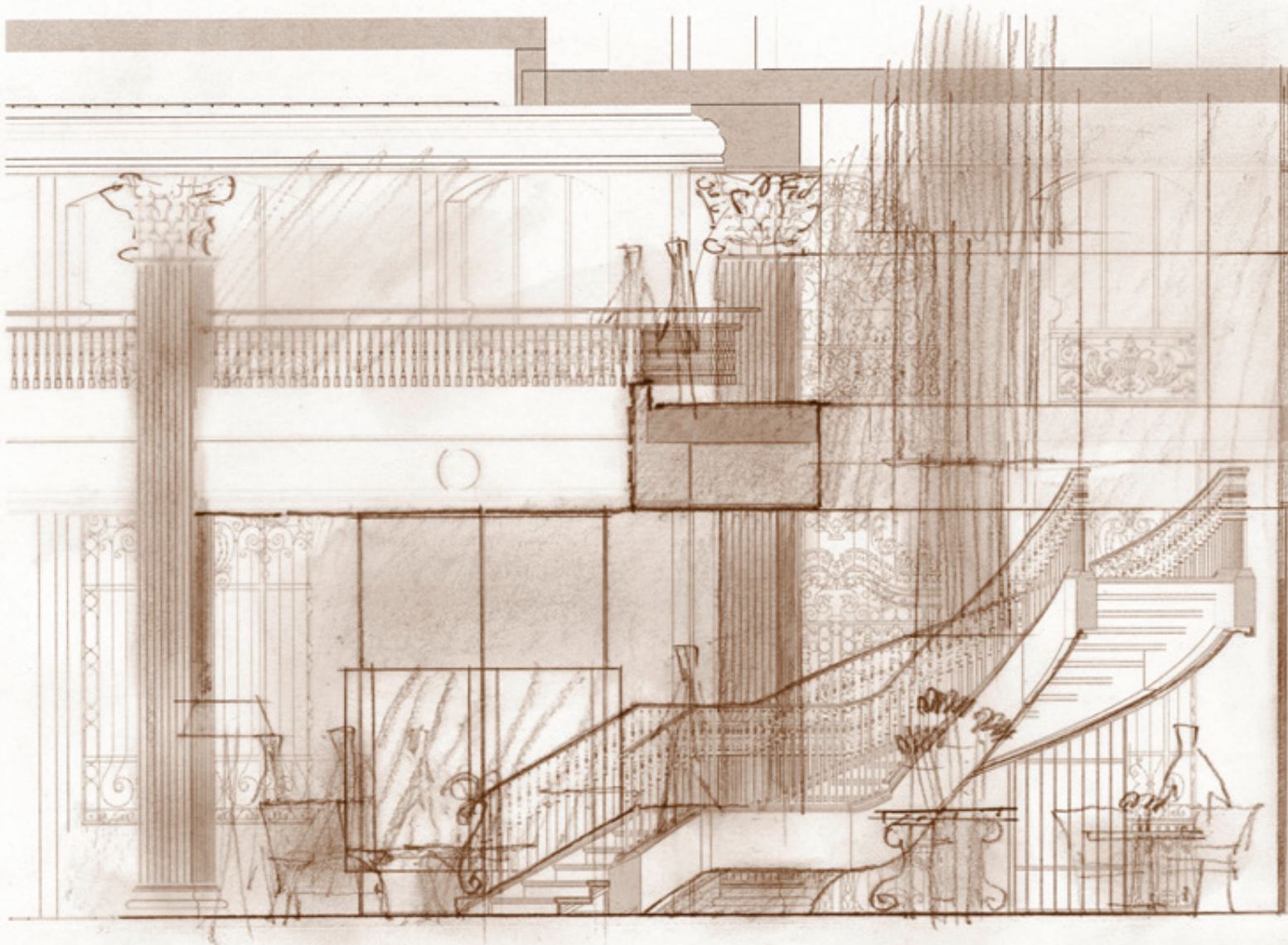




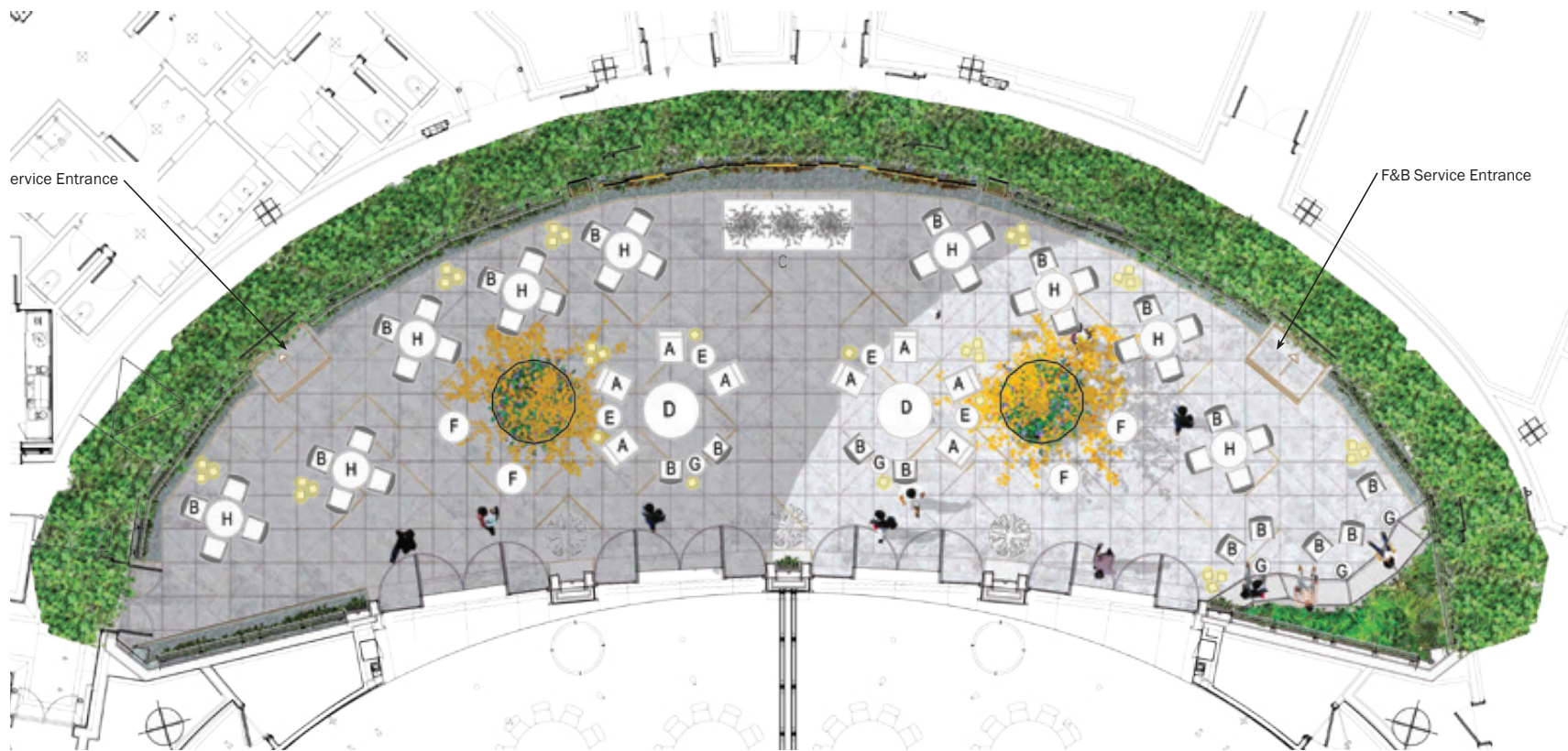


EL PATIO LOBBY
RENDERING





EL PATIO LOBBY
SKETCH SECTION



Ballroom Terrace Furnishings Concept:

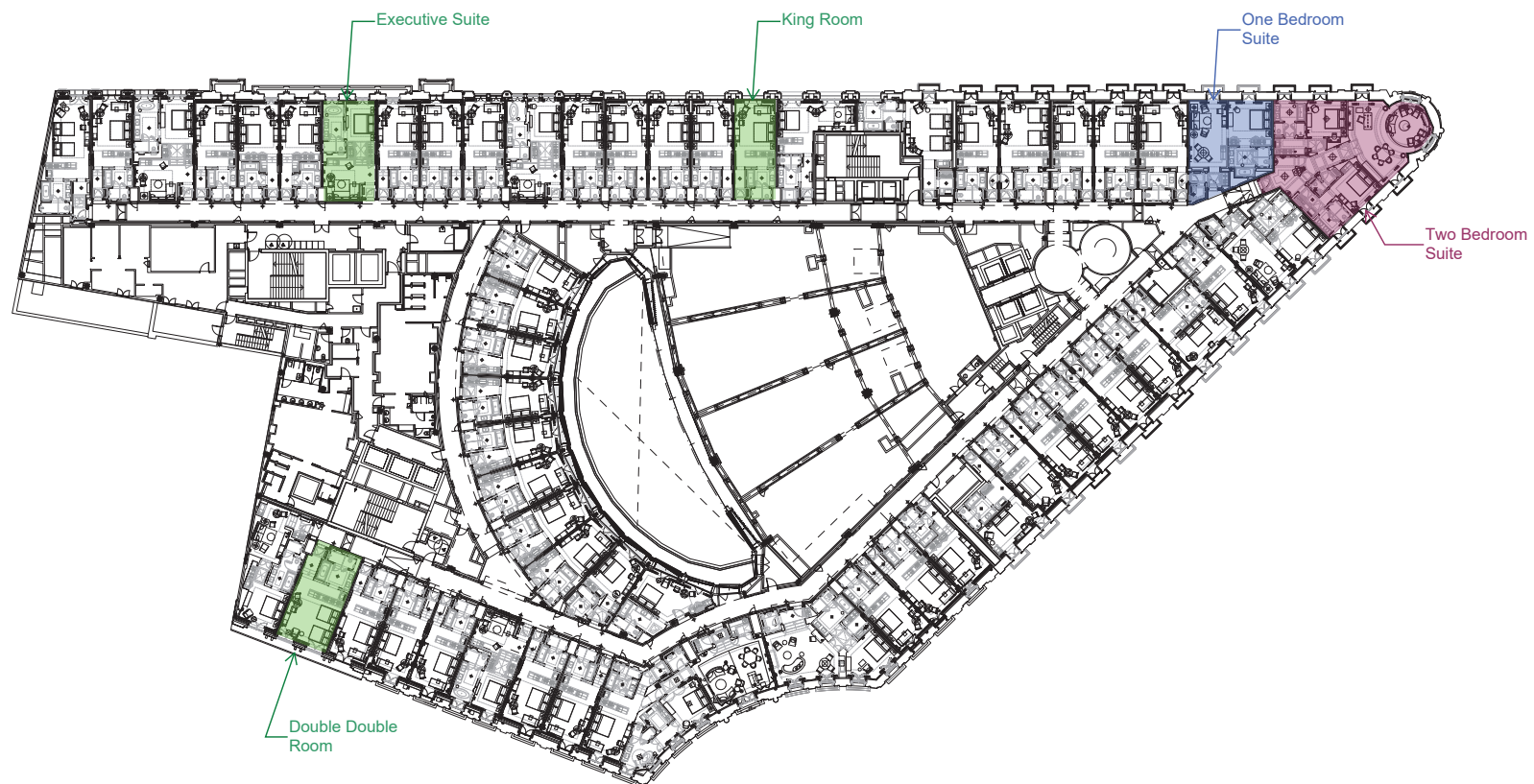
The outdoor terrace furnishings to have a contemporary spirit with a classical focal table.

- (2) Central radial seating groups to ground the space.
- Central classical focal table to act as a visual anchor.
- Right corner group with built in bench seating and dining height chairs.
- Casually placed bar height tables to come and go as required for events.

BALLROOM TERRACE PRESENTATION PLAN



GRAND BALLROOM
RENDERING

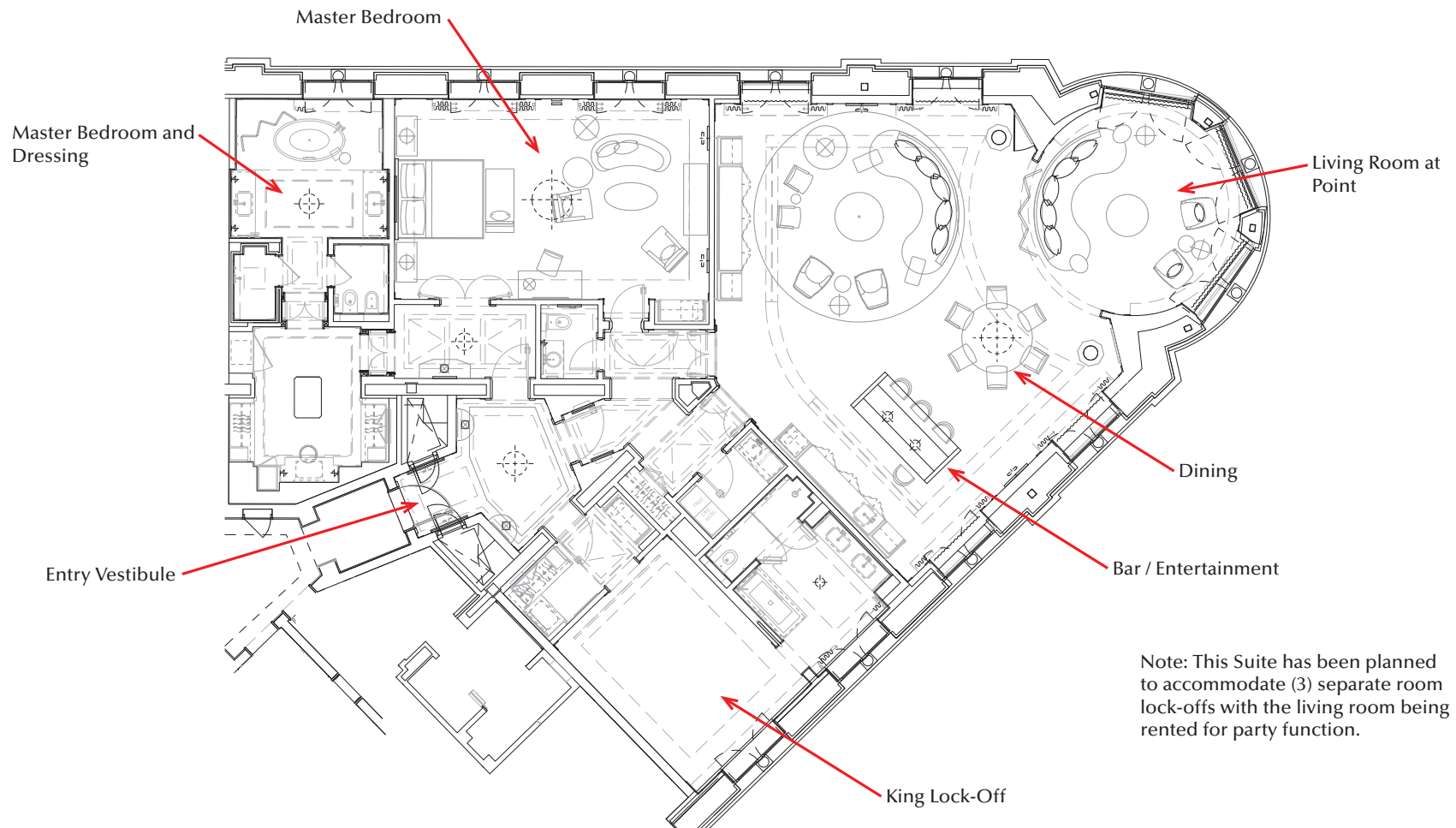


GUESTROOM LEVEL PRESENTATION PLAN

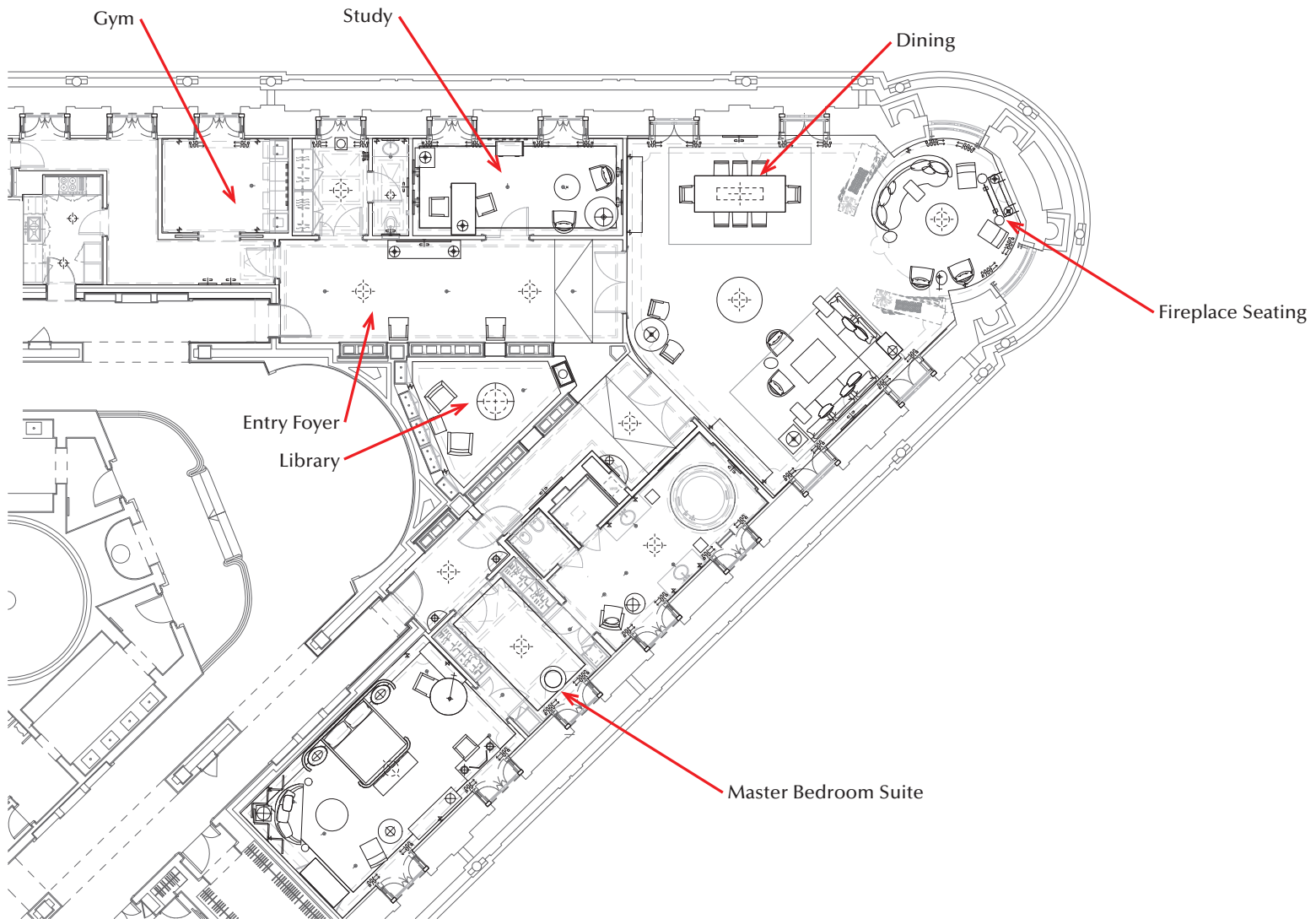


SUITE VARIATION EXAMPLE

PRESENTATION PLANS



PRESIDENTIAL SUITE PRESENTATION PLAN





ROYAL SUITE
RENDERING



SPA LOBBY
RENDERING